

# Professional Template for a 48x36 poster presentation

Your name and the names of the people who have contributed to this presentation go here.  
The names and addresses of the associated institutions go here.

## About this template

This template was designed to produce a 48x36 poster. You can modify it as needed for your presentation before you send it back to [PosterPresentations.com](http://www.posterpresentations.com) for premium quality, same day (rush-free) affordable printing.

By using this template poster will look professional, easy to read and save you valuable time from figuring out proper placement of titles, subtitles and text body.

For poster design beginners we have included many helpful tips you can find on the poster template itself. For better understanding of the poster-making process, we have also added a series of helpful **online tutorials** that will guide you through the poster design process and answer most of your poster production questions.

You can access the online tutorials from our **HelpDesk** page at: <http://www.posterpresentations.com/html/helpdesk.html> (copy and paste this link to your browser or press the F5 key on your keyboard and click on the link)

For further assistance and to order your printed poster call [PosterPresentations.com](http://www.posterpresentations.com) at 1.866.649.3004.

## Poster Basics – Poster Layout

To start using this template you first need to delete most of the contents of this page. Keep the poster title and one of the blue section headers.

The cleared template should now look like in **Figure 1**. After you decide how many sections you need for your poster (Introduction, Methods, Results, References, etc.), use the “copy” and “paste” commands to create as many copies of the blue section headers as needed.

Move the header copies approximately to where you think they need to be on the poster, so you can get a better sense of the overall poster layout. It will help you organize your content. See **Figure 2**.

You can now start adding your text. To add text use the **text** tool to draw a text box starting from the left edge of a column to the right edge and start typing in your text. You can also paste the text you may have already copied from another source. See **Figure 3**.

Repeat the process throughout the poster as needed.

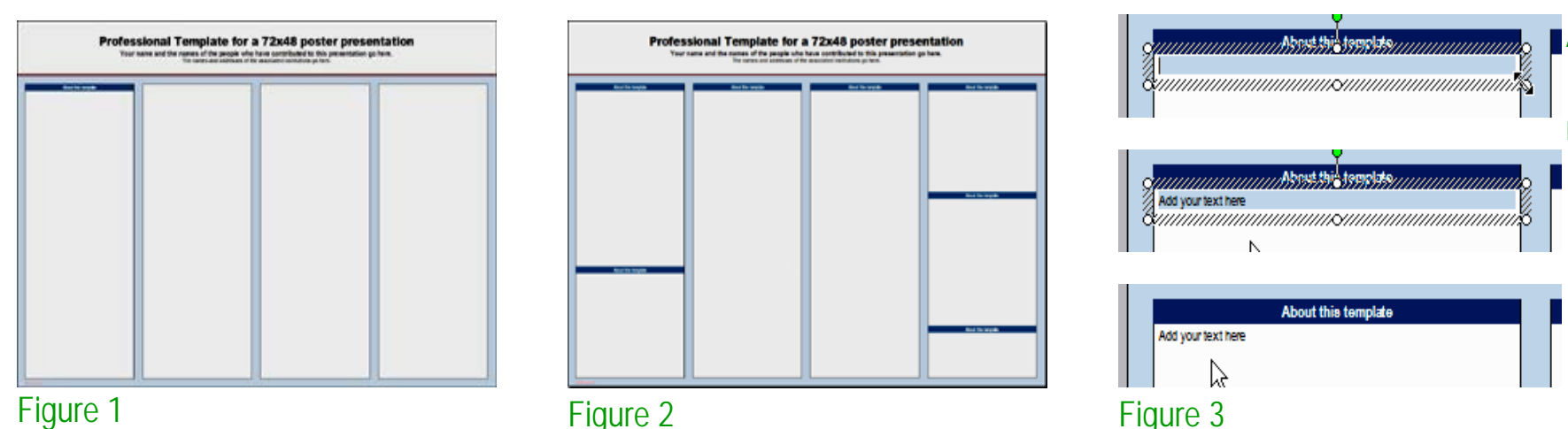


Figure 1

Figure 2

Figure 3

## Text Sizes

For this template we use the Arial font family at several recommended text sizes. You can use any typeface you like and at any size but try to stay close to the suggested limits.

**Figure 4** gives a visual reference of what different font sizes look like when printed at 100% and at 200%.

Due to a page size limitation in PowerPoint and unless your poster is going to be less than 56” in length, all the work done on this template is at half the size of the final poster. For example, if you choose a 21 point font for this poster, the actual printed size will appear as 42 points.

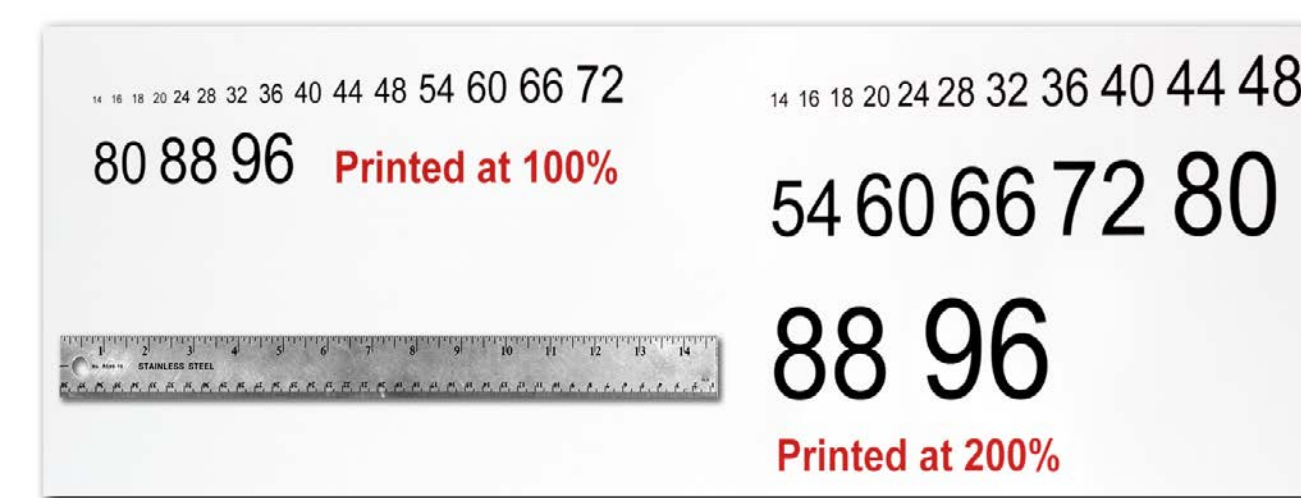


Figure 4

## Changing the poster’s column layout

Depending on how you layout your poster, you may want to change the column layout configuration.

For your convenience, we have included alternate master layouts. To select a different layout go to **FORMAT>SLIDE DESIGN** (**Figure 5**). The slide design pane will open. From there you can select an alternate layout (**Figure 6**).

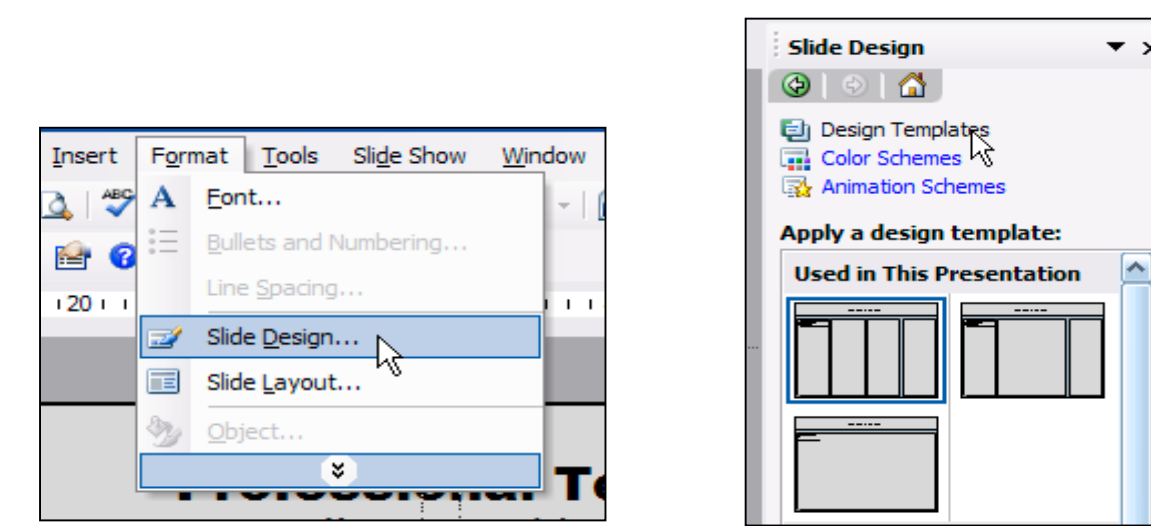


Figure 5

Figure 6

## Customizing the template color schemes

For those who wish to further personalize their poster presentation, we have included a number of printer-tested alternative color schemes for this poster template.

If you want to change the default colors and use your own color scheme, go to **FORMAT>SLIDE DESIGN** (**Figure 7**). The **SLIDE DESIGN** pane will open. Select **COLOR SCHEMES** (**Figure 8**). There, you can try different color schemes until you find the one you like.

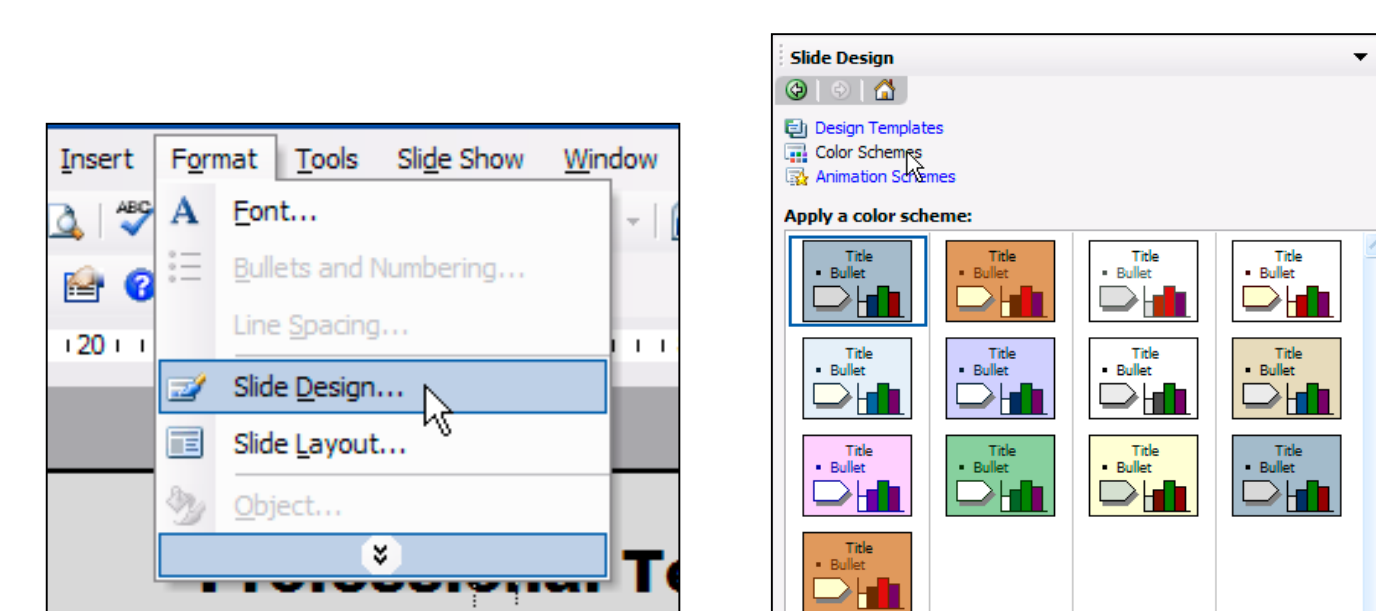
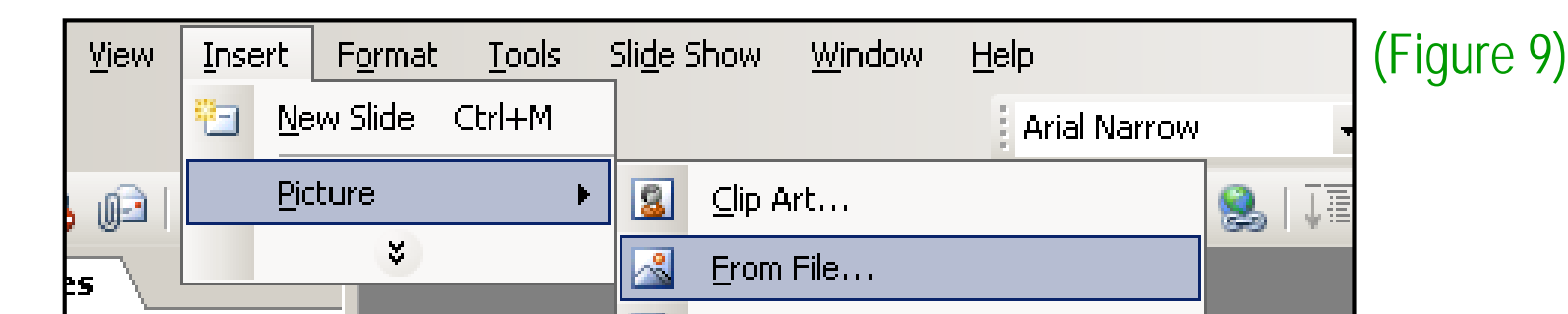


Figure 7

Figure 8

## Importing Photographs

It is highly recommended to use the largest images you have access to for your poster. Avoid images downloaded from the web and avoid copying and pasting images instead of using the “Insert” command. To insert an image to your poster go to **INSERT>PICTURE>FROM FILE** (**Figure 9**).



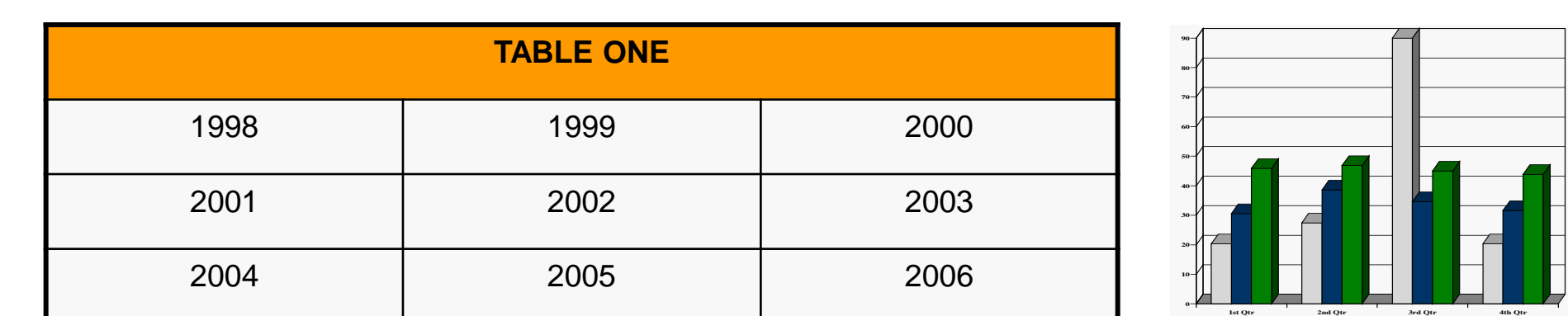
When the only source of a needed photo or graphic is the Web, scaling has to be applied with caution. Scaling an image more than three times its original size may introduce pixelization artifacts. Refer to **figure 10** as an example. A simple way to preview the printing quality of an image is to zoom in at 100% or 200%, depending on the final size of the poster. What you’ll see is likely what you’ll get at printing time.



Figure 10: Original image at 100%, enlarged 200% and 400%.

## Importing Tables & Graphs

Importing tables, charts and graphs is easier than importing photos. To import charts and graphs from Excel, Word or other applications, go to **EDIT>COPY**, copy your chart and come back to PowerPoint. Go to **EDIT>PASTE** and paste the chart on the poster. You can scale your charts and tables proportionally by holding down the **Shift** key and dragging in or out one of the corners.



## Labeling your headers

The blue headers are used to identify and separate the main topics of your presentation. The most commonly used headers in poster presentations are:

<b>Introduction, Summary or Abstract</b>	<b>Conclusion</b>
<b>Materials and Methods</b>	<b>Literature Cited</b>
<b>Results</b>	<b>Acknowledgements</b>

## Research Poster Design Services

Are you too busy or somewhat “PowerPoint-challenged” and would you like to have your poster presentation professionally designed, printed and delivered on time for your meeting?

We’ll be happy to provide you with our expertise. All you would need is to email us the following:

- A Word document with all your text or your multi-page PowerPoint document.
- Your logos, photos, charts, graphs and tables.
- Your deadline!

That’s it!

Your presentation will be ready within 24 to 48 hours and a proof will be emailed to you for revisions and final approval. Once we have your approval, your poster will be printed and shipped by next day or second day FedEx to your work, home or hotel.

Call us for a free estimate. We will be happy to assist. You can reach us toll-free at: **1-866-649-3004** Monday through Friday 9AM to 6PM PST.

## How to order your poster for printing

We complete and ship poster printing orders the same day they come in as long as we have your files by 12 pm Pacific Time (3 pm Eastern), Monday through Friday. Orders due the next day take priority. We do not charge rush fees for printing and our shipping rates are standard FedEx rates.

**How to order your printed poster:**  
To order your poster go to [www.posterpresentations.com](http://www.posterpresentations.com) and click on “Order your poster” on the top menu. Fill in the form and send us your file by choosing one of the two options offered.

You can email us at [production@cp-digital.com](mailto:production@cp-digital.com) or call us toll free at 1-866-649-3004.

## Contact information

**PosterPresentations.com**  
a Canterbury Media Services, Inc. company

2117 Fourth Street, Studio C  
Berkeley, California 94710

T: 510.649.3001  
F: 510.649.0331

TF: 1.866.649.3004

E: [production@cp-digital.com](mailto:production@cp-digital.com)